

# Tier II upgrade

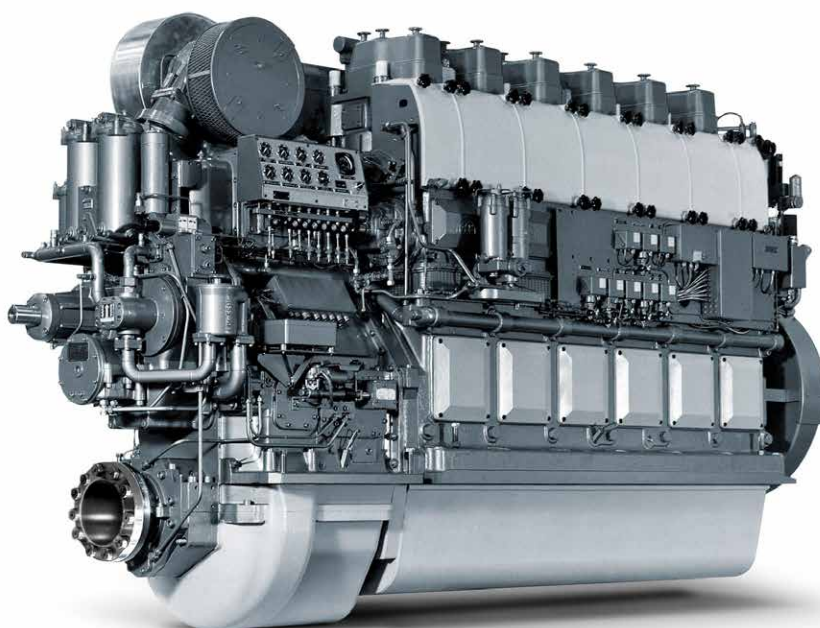
With the introduction of IMO Tier regulations in MARPOL Annex VI, vessels with medium speed engines must comply with Tier II regulations globally and Tier III regulations locally in ECA areas.

The pre-2011 four-stroke L23/30, L27/38 and L28/32 medium speed engine types were not designed for Tier II compliance. However, Everllence has launched a Tier II upgrade kit to recertify the engines to Tier II compliance.

The upgrade and Tier II compliance is obtained by internal engine modifications, i.e. simple exchange of components. The exact scope of modification depends on the specific engine type.

The ship's crew normally carries out the Tier II upgrade with the support of an Everllence superintendent who has expert knowledge of the propulsion configuration. The Tier II upgrade can be performed while overhauling the engine in connection with planned maintenance.

Please contact your Everllence PrimeServ office for more details.



**Everllence**

**PrimeServ**

# Tier II upgrade

Achieve low emission levels and regulatory compliance

## Key benefits

- Lower emission levels
- Compliance with regional and local legislation on emission levels
- Tax reduction as local authorities have introduced, or may introduce, emission fees
- New certification for EIAPP
- No on-board emission measurements required

## Scope of supply

- All relevant IMO components, according to the parent engine certificates
- New technical file to achieve the EIAPP certificate from the relevant classification society

## Applicable to

Applicable for the engine types L23/30, L23/30A, V23/30A, L27/38, L28/32, L28/32A and V28/32A

## More information

Contact your local Everllence PrimeServ office for more information about the product and how the upgrade can improve your propulsion configuration.

## Everllence PrimeServ

Niels Juels Vej 15  
9900 Frederikshavn, Denmark  
RetrofitDK@everllence.com  
www.everllence.com/services

