

Engine control box replacement

The Engine control box updates the original relay box for the control system due to technological advancements. This leads to higher operational reliability and safer engine operation.

Everllence GenSet engines have brought value to owners of power plants and vessels for many years. GenSet engines built two or more decades ago continue to deliver value today.

As part of the continuous development of our engines and availability of new electronic technology, Everllence PrimeServ has introduced an new control box, which fully replaces the existing relay box and includes multiple updated features. Further details are available in service letter SL05-458/JXN.

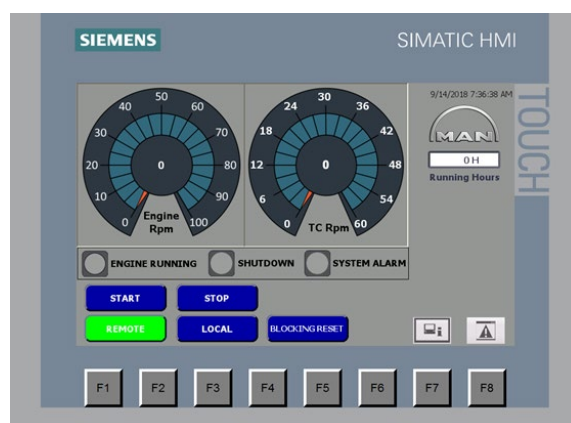
Proactive replacement lowers risk of downtime

Replacing a relay box with a new PLC-based control box can be time-consuming when it hasn't been planned in advance. A relay failure may therefore lead to prolonged downtime. By proactively replacing this control system component proactively with the Engine control box replacement, you can avoid this risk.

More than a control box

The new control system consists of a PLC (programmable logic controller) and a built-in touch-screen display with more settings to interact with, as well as more alarms that can trigger intervention in the engine operation whenever necessary. The display on the cabinet includes an option to switch between local control from the engine room and remote control from the control room. The system includes our Engine control box replacement retrofit, which improves the engine safety as it reacts faster than the mechanical overspeed protection. In addition, a new tachometer display will be installed on the engine.

Please contact your Everllence PrimeServ office for more details.



Engine control box replacement

Update obsolete systems

Key benefits

- Updated control box system, improving the component's lifetime, functionalities, and operational uptime
- Prevention of unplanned Gen-Set downtime due to control system failure
- High operational reliability
- Easy access to main functions via touchscreen
- Added functionality and connectivity to the engine control room

Scope of supply

- Cabinet with touchscreen display, containing PLC modules
- Electronic inductive speed pickup sensor for electronic overspeed protection
- Separate tachometer display for installation on the engine
- Installation accessories
- New electrical drawings
- New set of spare part plates

Applicable to

Available for the engine types L23/30H, L28/32H, and V28/32S

More information

Contact your local Everllence PrimeServ office for more information about the product and how the upgrade can improve your specific engine.

Everllence PrimeServ

H. Christoffersensvej 6
4960 Holeby, Denmark
RetrofitDK@everllence.com
www.everllence.com/primeserv